

Athens PARK HOMES



Manor

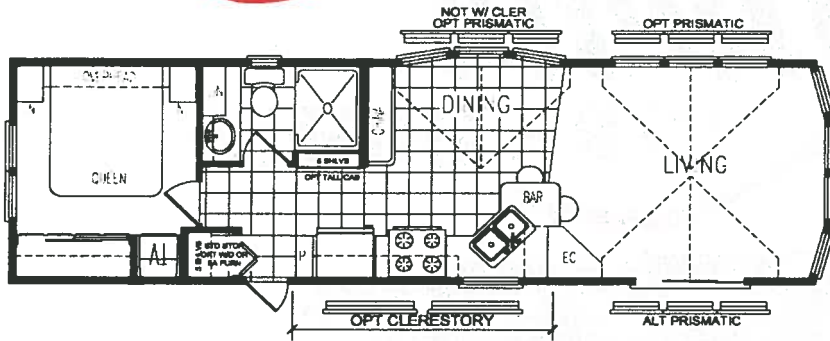
Royal

Estate

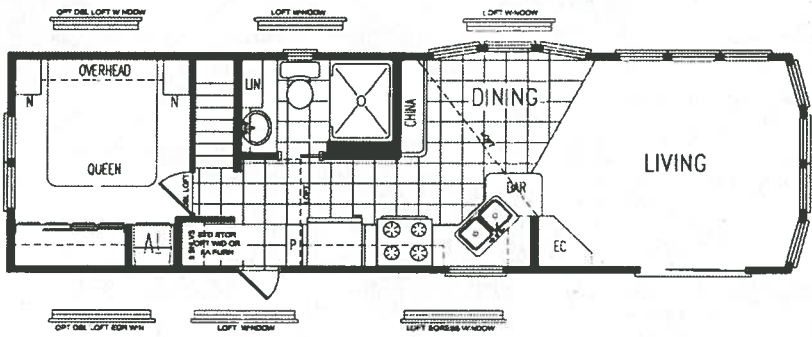
2009 Floor Plans



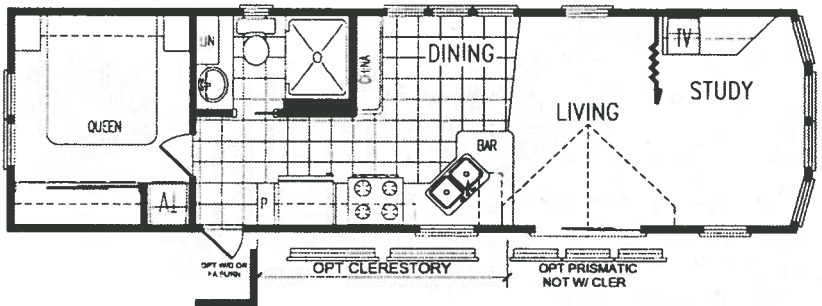
Innovation in Recreational Living
Manor Series



Model 101 - 399 Square Feet

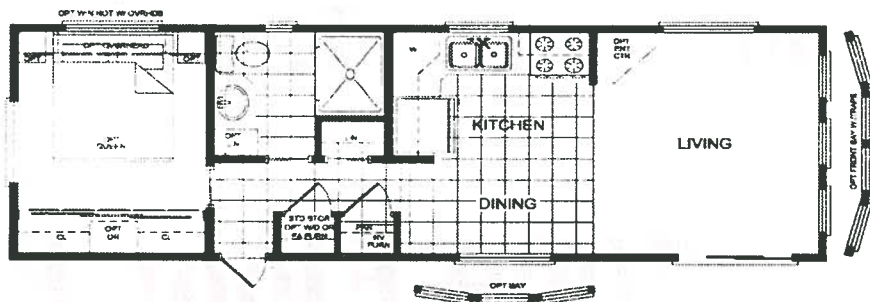


Model 101 Loft - 399 Square Feet



Model 102 - 399 Square Feet

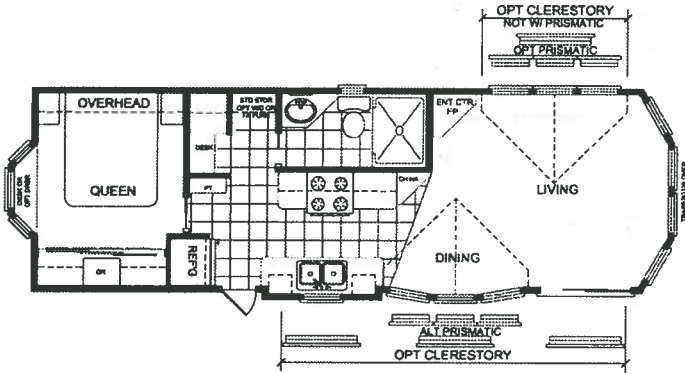
This model is a special. Not all Manor features are standard. Ask your retailer for details.



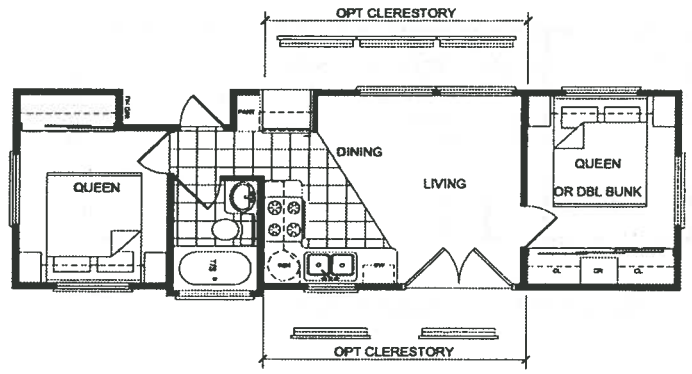
Model 120 - 399 Square Feet

Featuring fully taped and textured walls and ceilings / Fiber-Cement Siding by James Hardie

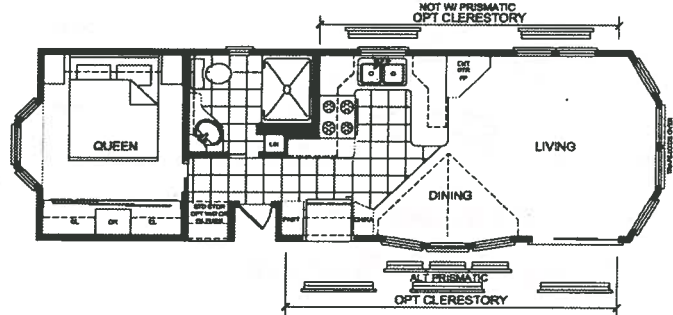
Royal Series



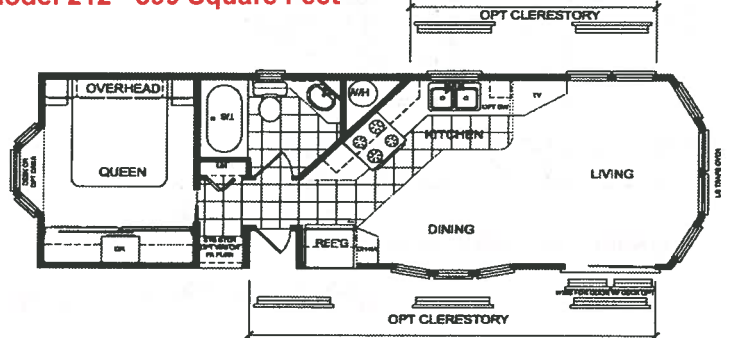
Model 201 - 399 Square Feet



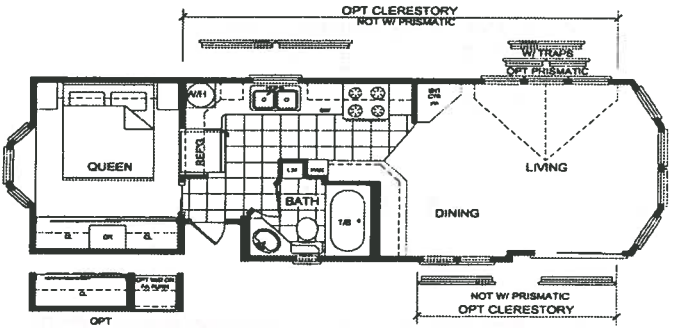
Model 212 - 399 Square Feet



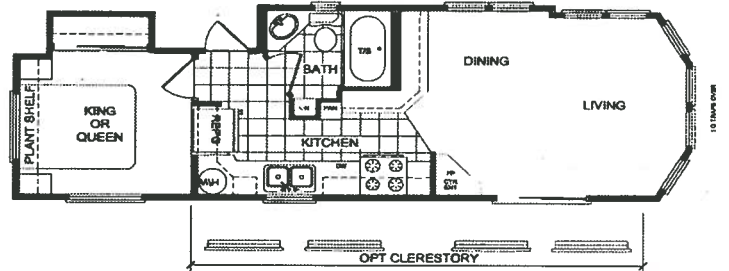
Model 202 - 399 Square Feet



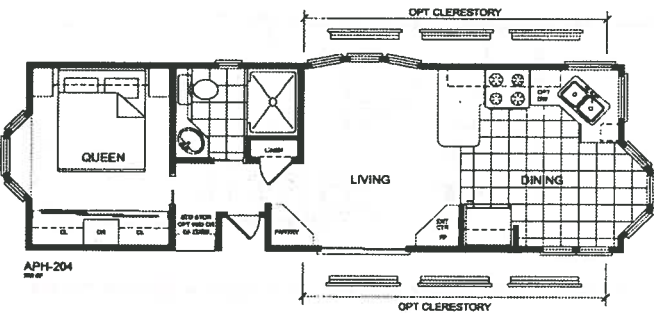
Model 213 - 399 Square Feet



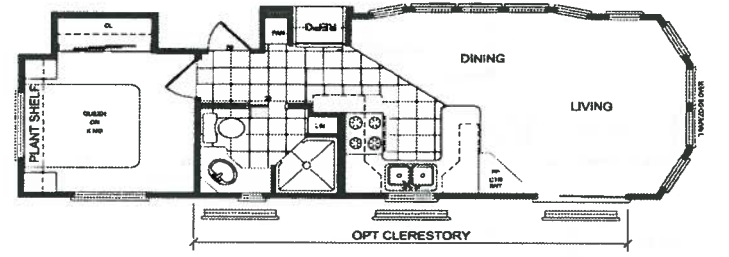
Model 218 - 399 Square Feet



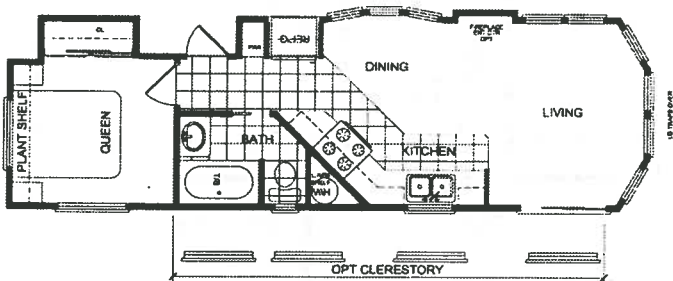
Model 216 - 399 Square Feet



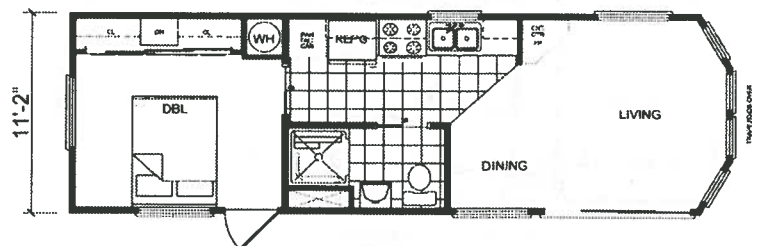
Model 204 - 399 Square Feet



Model 217 - 399 Square Feet

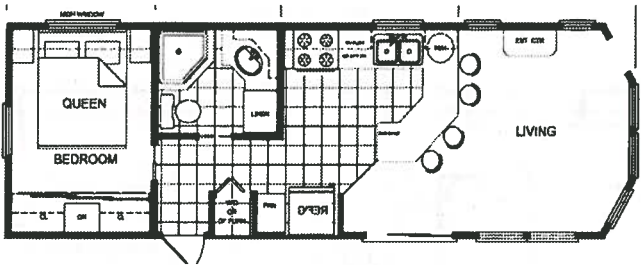


Model 211 - 399 Square Feet

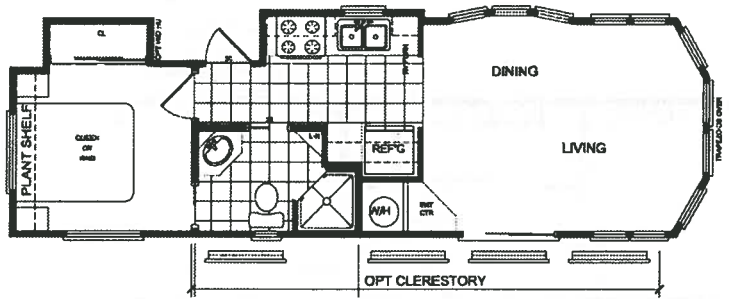


Model 219 - 399 Square Feet-Handicap friendly

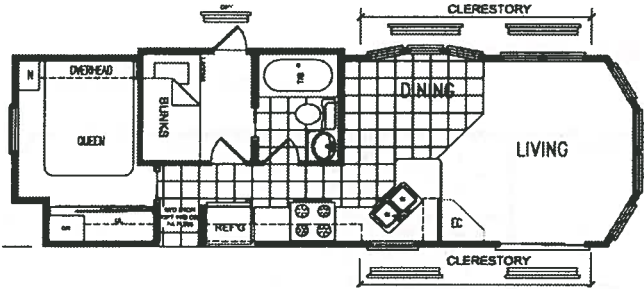
Prices and specifications subject to change without notice



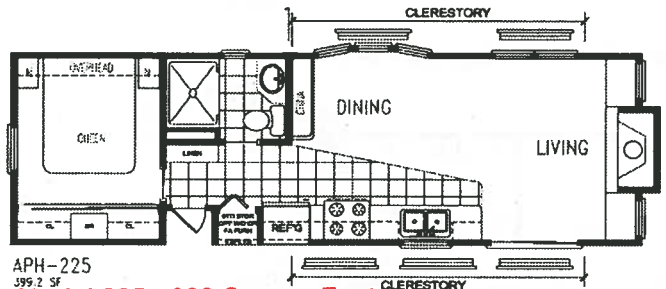
Model 231 - 399 Square Feet



Model 222 - 399 Square Feet

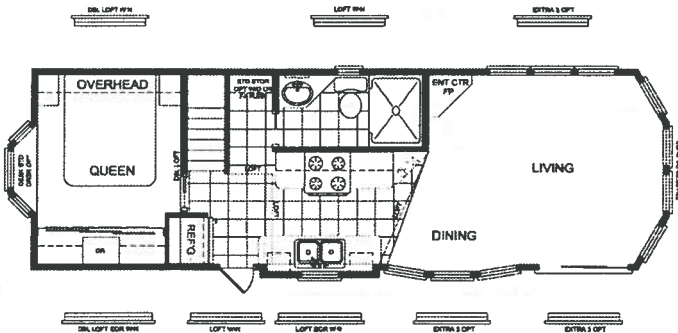


Model 224 - 399 Square Feet

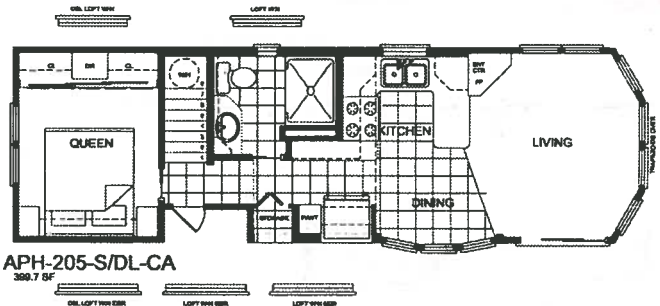


**APH-225
399.2 SF
Model 225 - 399 Square Feet**

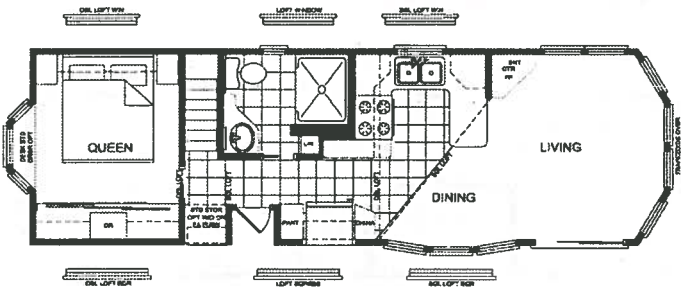
Athens Park Homes - Royal Loft Series



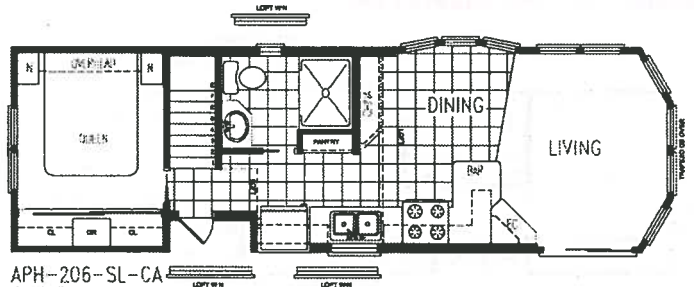
Model 201 - 399 Square Feet



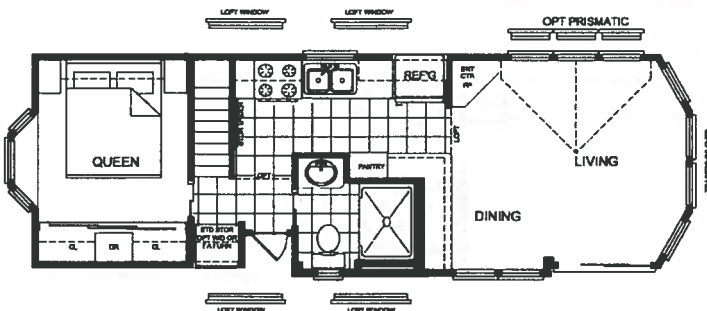
**APH-205-S/DL-CA
399.7 SF
Model 205 - 399 Square Feet - California approved loft**



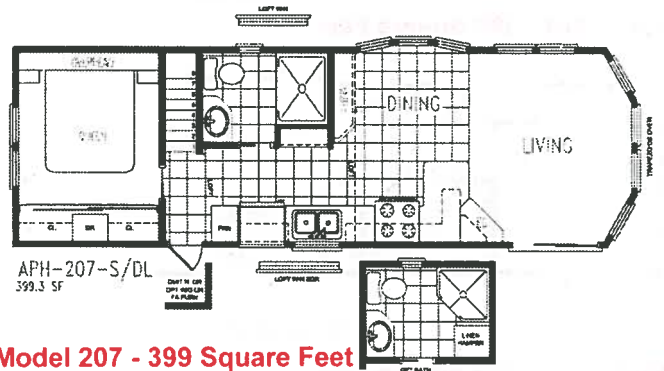
Model 202 - 399 Square Feet



**APH-206-SL-CA
399.7 SF
Model 206 - 399 Square Feet - California approved loft**

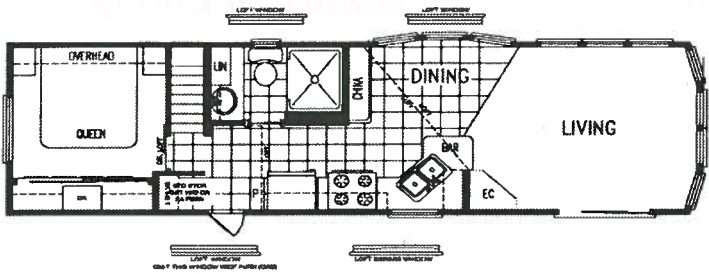


Model 203 - 399 Square Feet

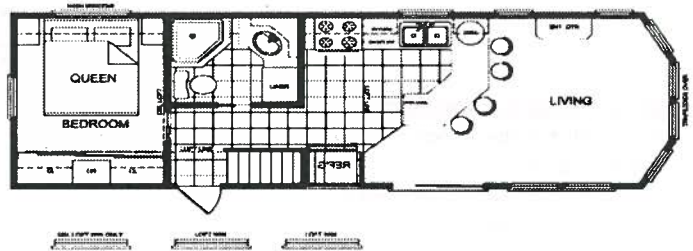


**APH-207-S/DL
399.3 SF
Model 207 - 399 Square Feet**

Innovation in Recreational Living

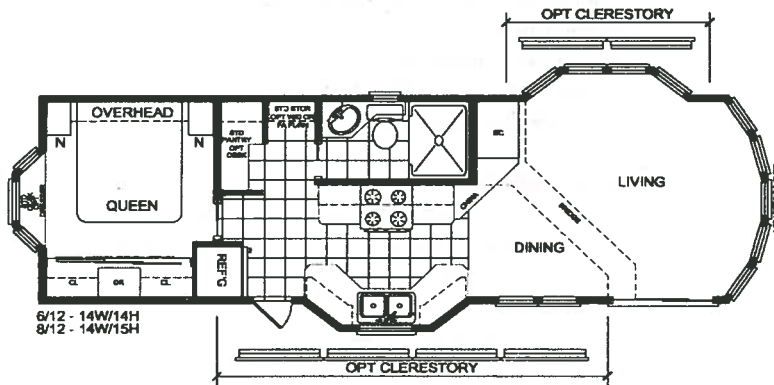


Model 226 - 399 Square Feet

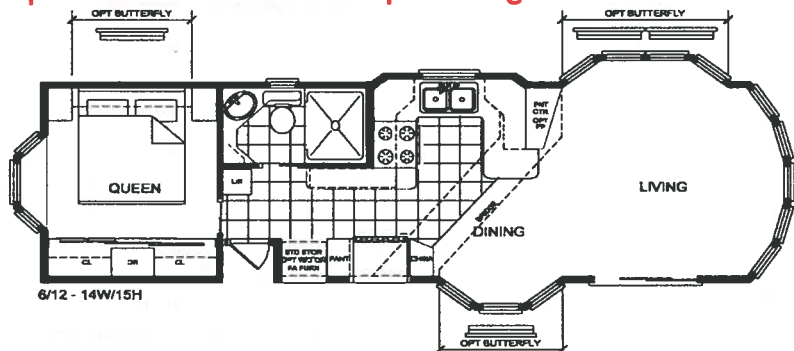


Model 231 - 399 Square Feet

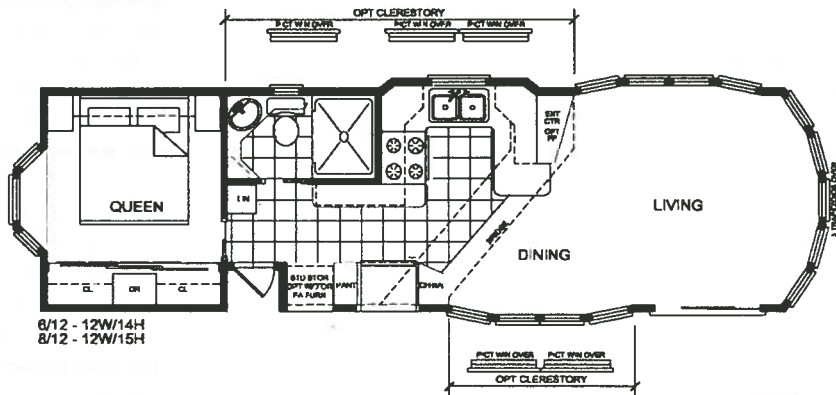
Estate Series



Model 301 - 399 Square Feet - 14 Wide ships 14 high



Model 303 - 399 Square Feet - 14 Wide ships 15 high



Model 304 - 399 Square Feet - 12 Wide ships 14 high

Featuring fully tape and textured walls and ceilings / Fiber-Cement Siding by James Hardie

Floor plans and features subject to change without notice

Park Models



"Innovation in
Recreational Living"

Standard Features

Energy Saving Comfort Features:

Insulated tilt and clean single hung windows
Insulated patio door
RV type rear door w/ screen & deadbolt
6'-4" Entry Door Heights
R-22 Fiberglass insulation in roof
R-11 Fiberglass insulation in the sidewalls and floors.
Vented attic with vapor barrier
Ceiling fan in living room with light
Fire extinguisher
40,000 BTU gas furnace w/ auto ignition
Energy saving house wrap around home

Heavy Duty Exterior Construction Features:

4 Large window front angle bay
Heavy asphalt/fiberglass shingles - 20 year warranty
2x6 floor and 2x4 sidewall construction - 16" O.C.
Trussed roof rafters
Full length 10" steel "I" - beam frame
Cempanel Fiber-Cement siding by James Hardie
Backer Board backer around complete home
High density Sheptex (rodent proof) underbelly
Detachable hitch

Heavy Duty Interior Construction Features:

90" Sidewall height w/ extra high vaulted ceiling
Hidden cabinet door hinges
Premium metal drawer guides and rollers
19/32" plywood T&G floor decking
Sealed plywood at entry doors and plumbing locations
Custom molding & trim packages
Lined O/H Cabinets in kitchen

Decorator Features:

Tape and textured sheetrock walls
Attractive towel bar & tissue holder-Shipped loose
Mirrored wardrobe doors
Drawers below wardrobe
Premium Chandelier in dining room
Mullions at most windows (grids)
China lavatory sink in bath
Popular side bay (per model)
Textured Ceiling
Deluxe overhead lighting
Attractive patio light
Premium decorator drapes and deluxe valances
Vertical blind with valance at patio door
Deluxe medicine cabinet in bathroom
High pressure laminate countertops
2" blinds throughout

Convenience Features:

RPTIA coded and inspected
50 Amp electrical service with pigtail
17 Cu. ft. double door frost free refrigerator

One piece 48" fiberglass shower - most models
20 Gallon electric water heater
Premium Sovereign floor tile (per print)
Acrylic kitchen sink with single lever faucet & sprayer
Metal faucet in bath
Porcelain house type toilet
Flip down sink trays in kitchen
Deluxe 30" free-standing gas range
Power range hood and light
Easy touch rocker light switches
Entertainment center (per print)
Exterior GFCI 110 volt receptacle by patio door
Smoke detector
Shut off valves throughout
2 conveniently located TV & Phone jacks
Dual reading lights over bed

Manor Special Features

Vertical Cempanel Fiber-cement siding with accent stripe
4 Large window front angle bay with 2 trap windows above
Beautiful 5 piece MDF cabinet door and drawer fronts
Plush style carpet with high density rebond carpet pad - Ritzy
Laminated edging & backsplash in kitchen & bath
Wood cornice boards front windows - valances all windows

Royal Special Features

Cempanel Fiber-cement siding with 5 rows of Cemplank lap
4 Large window front angle bay with 2 trap windows above
Flying gable roof on hitch end (not available on metal roofs)
Beautiful 5 piece wood cabinet door and drawer fronts
Rear bay window in bedroom - most models
Smooth sliding & room saving pocket doors-most models
Glass inserts in overhead cabinets (per model)
Plush style carpet with high density rebond carpet pad - Ritzy
Ceramic backsplash and edging in kitchen & bath
Wood cornice boards over front and side living room windows
Valances and drapes in living room and dining room

Estate Special Features

Cempanel Fiber-cement siding with 5 rows of Cemplank lap
5 Large windows rounded front bay with 3 trap windows
Beautiful 5 piece raised wood cabinet doors
Wood drawer fronts and stiles
Rear bay window in bedroom - most members
Smooth sliding & room saving pocket doors - most models
Popular large side bay - most models
Glass inserts in overhead cabinets (per model)
Upgrade carpet including Berber w/ rebond carpet pad - Altima
Ceramic backsplash and edging in kitchen & bath
Wood cornice boards over front and side living room window
Upgraded valances and drapes in living & dining room
Nickel kitchen faucet with pull out sprayer
Nickel faucets in bath
3" Base board molding
Deluxe lighting throughout

Prices and specifications are subject to change without notice

